



**PJM FM Ltd**  
Project management  
&  
CAD Service

My business was established in 2014 working as a project manager for a prestige car manufacturer until 2019 specialising in factory layout and installation of manufacturing assembly lines. Since 2019 I have focussed the business on designing manufacturing facilities, automated assembly lines, lifting equipment, conveyors, bespoke automated assembly cells etc

Using a broad range of software packages, there is no limit to file format both from the customer and to the customer.

Software packages include:

Fusion 360

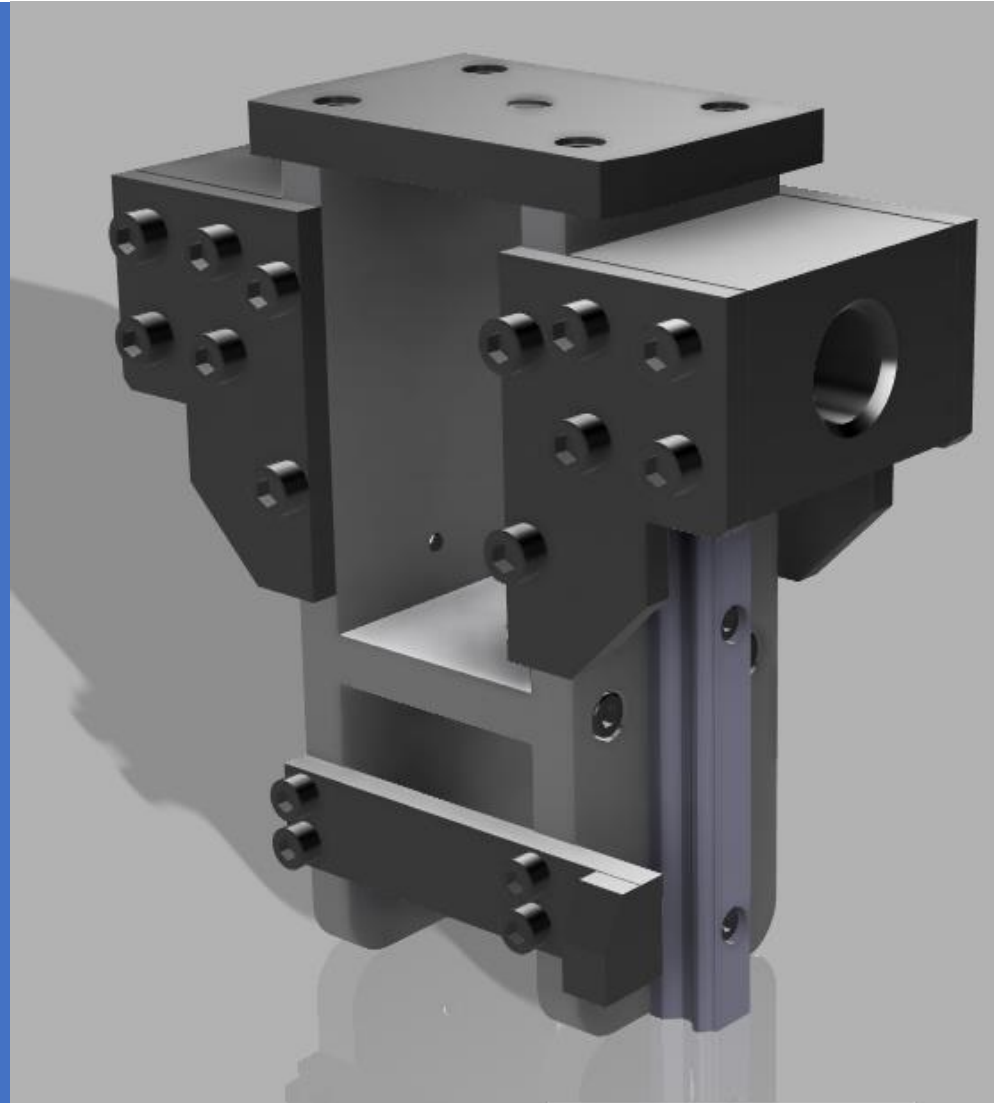
Inventor

AutoCad

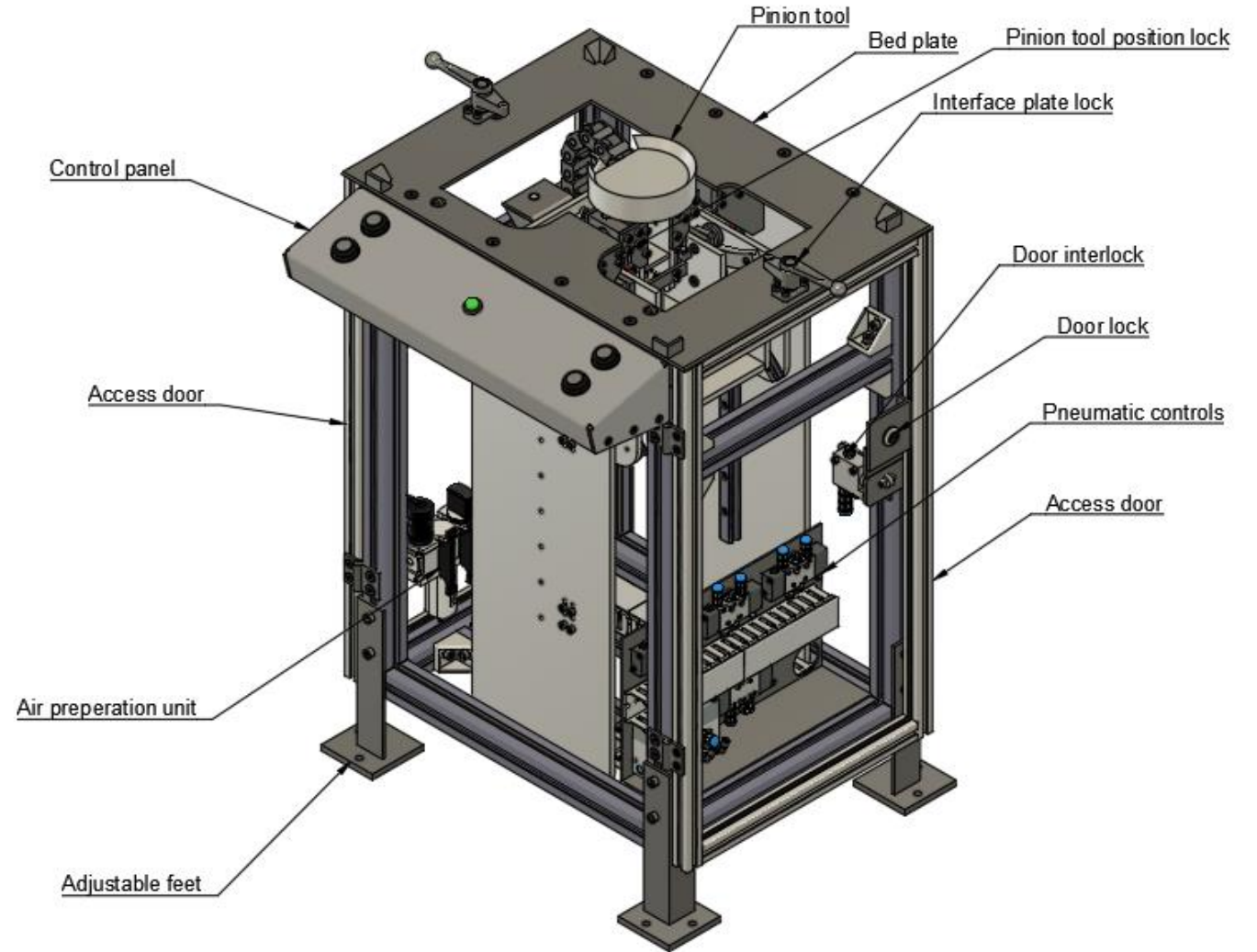
Navisworks

Solid Edge

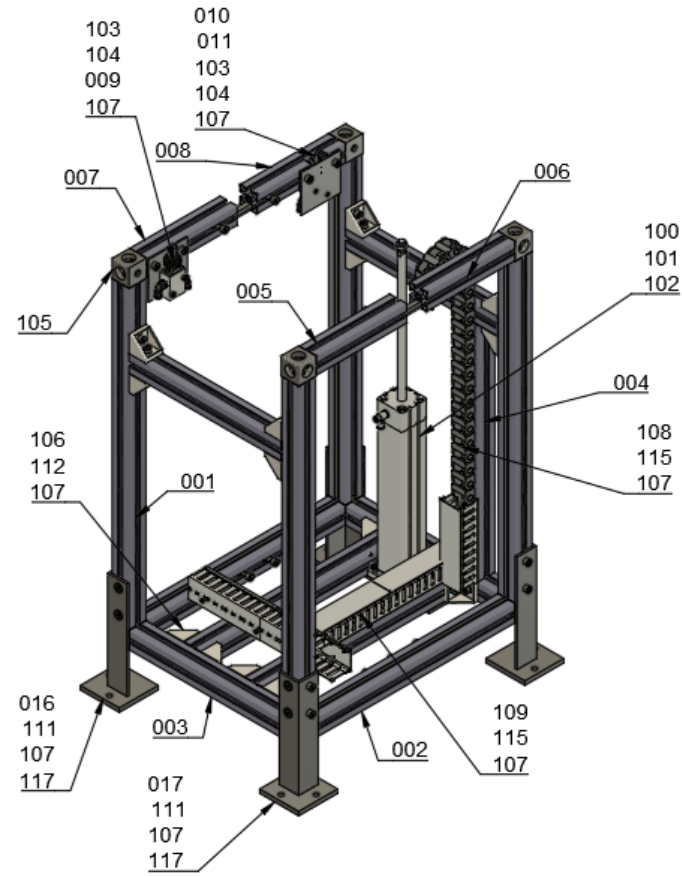
- Specialise in
- Automation
- Factory layouts
- Optimisation of processes
- Machinery
- Modification of existing production facilities
- 
- Normal process:
  - Concept model
  - DFMEA
  - Design risk assessment
  - Analysis of model and components (FEA study)
  - Model detail
  - Manufacturing drawing
    - General arrangements
    - Detail drawings
    - Assembly instructions
- 7. OEM manual creation



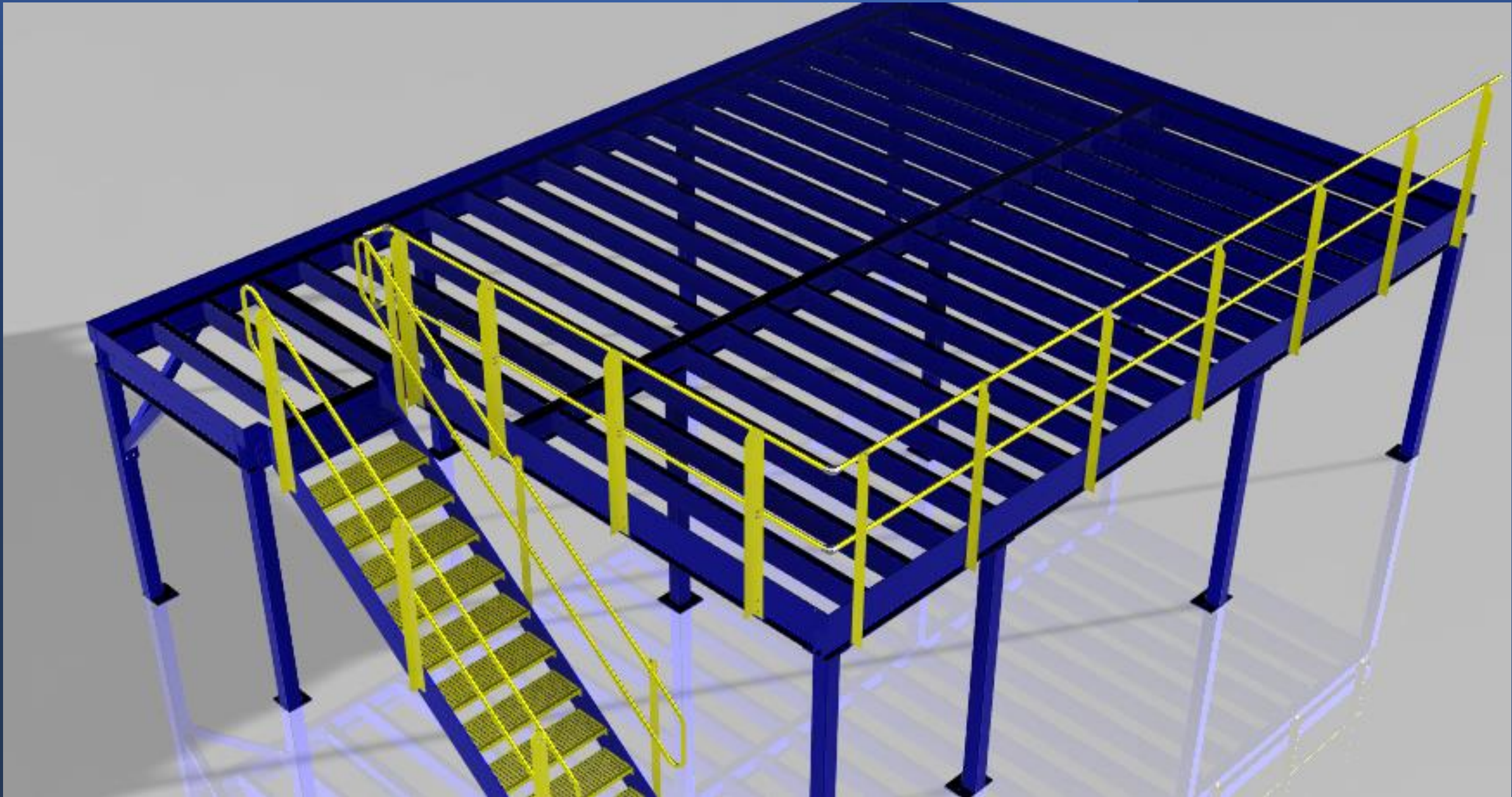
- Example customer sign off image



117	M8 x 16 Countersunk	421-M8-16	16
116	M6 Washer	776-M6-ZP	2
115	M8 x 16 Dome screw	422-M8-16	12
114	M8 x 10 Dome screw	422-M8-10	2
113	M8 x 25 Cap screw	420-M8-25	4
112	M8 x 20 Cap screw	420-M8-20	46
111	M8 X 16 Cap Screw	420-M8-16	28
110	M5 x 30 Cap screw	420-M5-30	4
109	Trunking	301-1974	1
108	Flexi trunking	498-8686	1
107	M8 Trnut	390-0284	70
106	Corner bracket	390-1805	14
105	Cubic connector	523-269	8
104	Pneumatic fitting	QSL-1_4-6	4
103	2-2 Valve with plunger	VM220-02-06A	2
102	Speed control	GRLA-1_8-QS-6-D	2
101	Cylinder mount	FNC-50	1
100	Cylinder	AND-50-320-ELVA-A-P-A	1
017	Adjustable leg LHS	ST2PF-01-017	2
016	Adjustable leg RHS	ST2PF-01-016	2
015	Window panel	ST2PF-01-015	2
014	Window seal	ST2PF-01-014	4
013	Window seal	ST2PF-01-013	4
012	Cylinder mount	ST2PF-01-012	1
011	Sensor plate	ST2PF-01-011	1
010	Sens or plate spacer	ST2PF-01-010	2
009	Sensor plate	ST2PF-01-009	1
008	Aluminium Extrusion	ST2PF-01-008	1
007	Aluminium Extrusion	ST2PF-01-007	1
006	Aluminium Extrusion	ST2PF-01-006	1
005	Aluminium Extrusion	ST2PF-01-005	1
004	Aluminium Extrusion	ST2PF-01-004	1
003	Aluminium Extrusion	ST2PF-01-003	4
002	Aluminium Extrusion	ST2PF-01-002	4
001	Aluminium Extrusion	ST2PF-01-001	4
Ref	Description	Part number	Qty



# Example of General Assembly

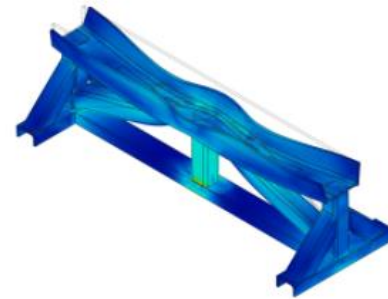


FEA Study –  
Full report issued on request.

☐ **Stress**

☐ **Von Mises**

[MPa] 0  108.7



☐ **Displacement**

☐ **Total**

[mm] 0  0.1303

